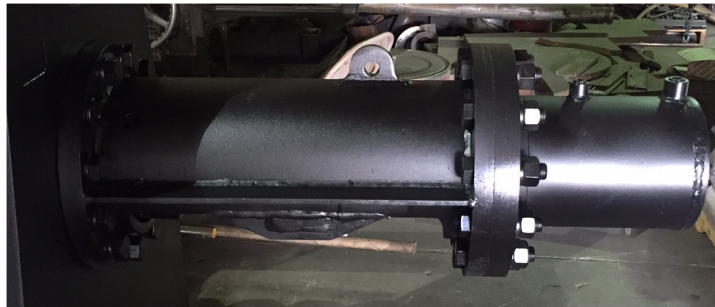
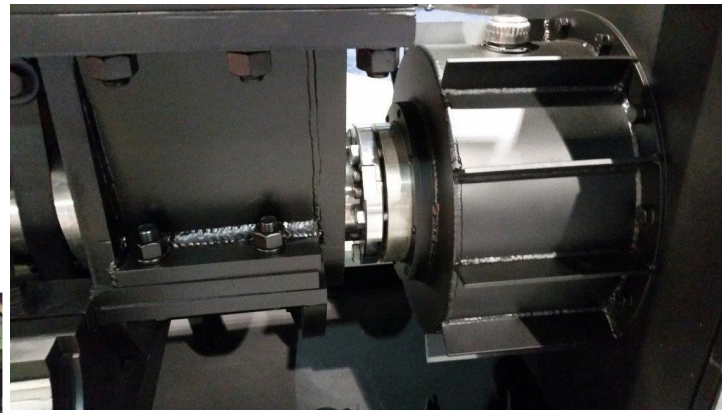




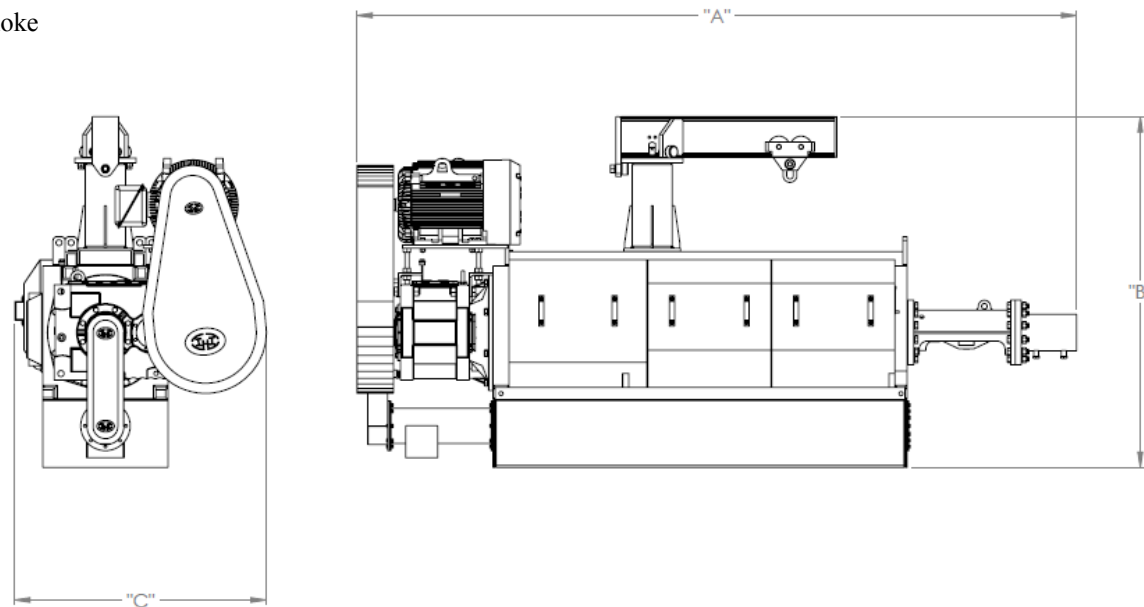
Press screw inside main cages



Super Choke



Thrust bearing assembly and inlet hopper



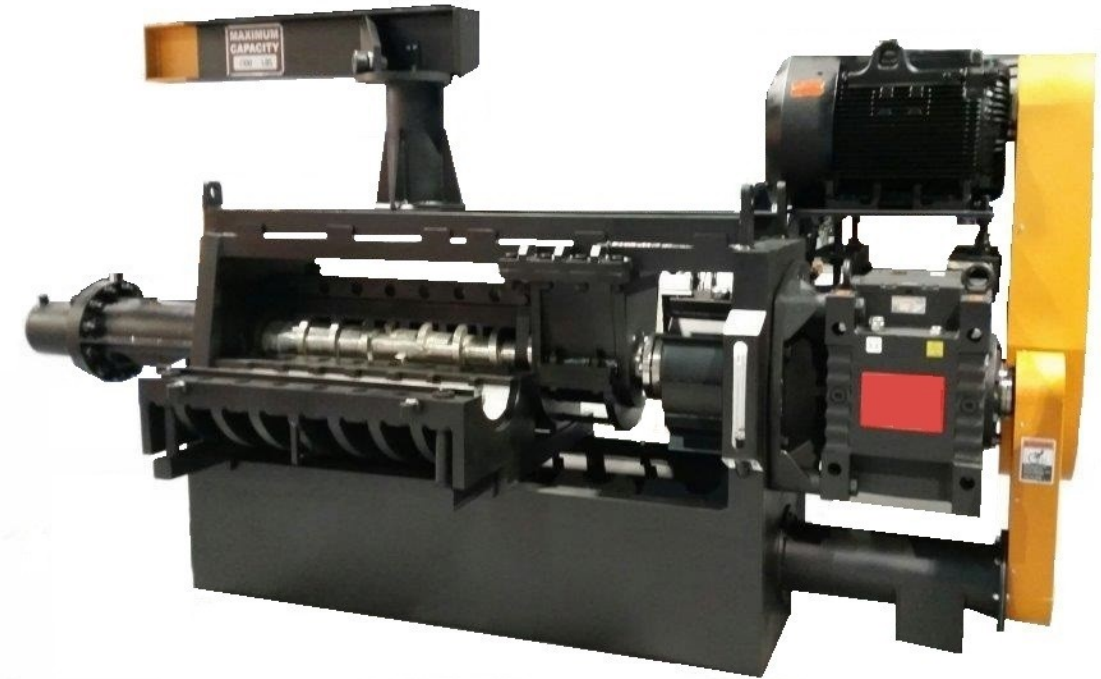
Model	A Length	B Length	C Length	Screw Diameter	Motor HP	Approx. Soya Capacity	Weight
IHI 25EXT	181"	80"	63"	8" – 9"	75 – 200 HP	48 Tons per Day	22,000 Lbs
IHI 50EXT	211"	96"	72"	10" THRU	150 – 300 HP	66 Tons per Day	28,000 Lbs
IHI 100EXT	211"	96"	72"	12" – 10"	200 – 400 HP	78 Tons per Day	29,000 Lbs
IHI 150EXT	235"	96"	72"	12" THRU	200 – 400 HP	100 Tons per Day	29,000 Lbs

Note: Specifications subject to change without notice, capacities vary per application.



INDUSTRIAL HARDFACING, INC  
218 EAST MAIN STREET  
LAMONI, IA 50140  
PHONE: 641.784.6921  
TOLL FREE: 800.247.7778  
FAX: 641.784.8370  
www.industhard.com  
sales@industhard.com

## IHI Oil Seed Screw Press



- Designed by processors for oil seed versatility and operational efficiencies.
- Industrial standard drive components available worldwide.
- Belt driven drive system allows for screw speed to be optimized per application.
- Screw diameters and designs from 8" to 12", provide higher capacities with consistently lower residuals.
- Optional screw shaft for water cooling and/or steam heat.
- Segregated thrust bearing from drive eliminates gearbox contamination.
- Super choke discharge provides improved product control by faster response time...reduces motor overloads and eliminates contact with the screw!



INDUSTRIAL HARDFACING, INC  
218 EAST MAIN STREET  
LAMONI, IA 50140  
PHONE: 641.784.6921  
TOLL FREE: 800.247.7778  
FAX: 641.784.8370  
www.industhard.com  
sales@industhard.com

# IHI Oil Seed Screw Press

**1 Drive Motor**—industry standard, foot mount.

**2 Belt Drive**—optimizes screw speed per application.

**3 Chain Drive**—tallow auger

**4 Gear Box**—industry standard, C-face mount.

**5 Infeed Hopper**—bolted mounting to frame.

**6 Main Cage**—spacing per application.

**7 Screw Alignment**—higher capacity and lower residuals.

**8 Super Choke**—faster product feed response time.

**9 Thrust Bearing**—segregated location.

**10 Frame**—precision, high strength, provides exact alignment.

**11 Service Jib**—full length frame travel with 360 degree rotation.

**12 Tallow Auger**

